



---

**TRANSENSE Fixed Wireless GSM  
Deskphone**

*Quick Installation Guide*

For CLARITY BG1200-G  
GSM Deskphone without Data

<b>ANNOUNCEMENTS .....</b>	<b>3</b>
<b>MANUAL ENGAGEMENT .....</b>	<b>4</b>
<b>TELEPHONE INTRODUCTION .....</b>	<b>4</b>
TELEPHONE PARTS: .....	4
ASSEMBLING THE TELEPHONE .....	6
THE NAME OF EACH PARTS .....	7
THE KEY DESCRIPTION .....	8
<b>PHONE OPERATION .....</b>	<b>9</b>
<b>INTRODUCTION OF MENU FUNCTION.....</b>	<b>10</b>
MESSAGE .....	10
CALL LOG .....	12
PB 12	
SETTING.....	12
CALL SERVICE.....	13
<b>THE USAGE OF BASIC FUNCTION.....</b>	<b>13</b>
THE FUNCTION OF MENU IN TALKING .....	13
TEXT METHOD .....	14
<b>TROUBLE AND CAUSE.....</b>	<b>14</b>

## Announcements

Thank you for choosing our product. CLARITY series BG1200 GSM Deskphone offers wireless connectivity to GSM digital cellular communication network. It provides for all the same convenience and features of a fixed-line business telephone as well as SMS text support and data modem for data access over a GSM network. CLARITY BC1200 wireless business telephone is designed to meet the stringent quality and reliability standards that users have come to expect from an industry-standard fixed-line business telephone.

Please read this manual carefully before using the product.

### ***Important Safety Information***

#### **This product is not intended for use in the following circumstances**

- Area(s) where radio transmission equipment (such as cell phone) are not permitted.
- Hospitals, health care facilities and area(s) where cell phones are restricted by law.
- Gas stations, fuel storage and places where chemical are stored.
- Chemical plants or places with potential explosion hazard.
- Any metal surface that may weaken the radio signal level.

#### **Lithium battery safety handling precautions**

- Do not drop the battery into water as it will render it defective and unusable.
- Do not heat or incinerate the batteries.
- Do not attempt to solder the battery terminals directly onto any equipment as it might damage the safety valve on the battery cap causing the battery to leak.
- Adopt proper procedures when disposing used battery. Adhere to guidelines provided by the local authorities and government body.

### ***Copyright Announcement***

Copyright *Transense Communication Pte Ltd. 2003.*

All rights reserved.

Reproduction, transfer, distribution or storage of part or all of the contents in this document in any form without the prior written permission of Transense is prohibited.

Information Edition: UG – CLARITY - BG1200 - 1.4

## Manual engagement

- The contents in □□ represents the key on telephone. For example □OK□ represents **OK** key.
- The contents in □□ represents the left or right soft key in screen. For example: □PB□ represents soft key.
- Some words in telephone menu are written in shortform. Below is a glossary of the acronyms.
- Glossary

SIM	Subscriber Identity Module
ME	Mobile Equipment
PB	Phone Book
SC	Service Center
CB	Cell Broadcast
sel	Select
Fdn	Fixed Dialing Number
CFU	Call Forward Unconditionally
SS	Supplementary Service
CLIP	Calling Line Identification Presentation
CLIR	Calling Line Identification Restriction
COLP	Connected Line Identification Presentation
COLR	Connected Line Identification Restriction
AOC	Advice of Charge
ACM	Accumulated call meter
ACMMAX	Accumulated call meter maximum

## Telephone Introduction

### Telephone Parts:

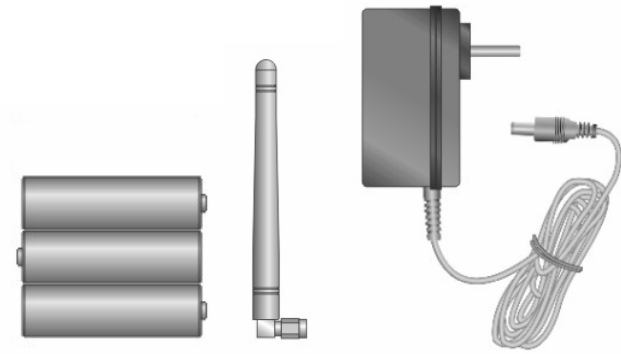
The telephone is composed by the following parts:

- (1) Telephone body
- (2) Handset and the spiral lead
- (3) Rechargeable batteries
- (4) Antenna
- (5) Power supply adapters



(1)

(2)



(3)

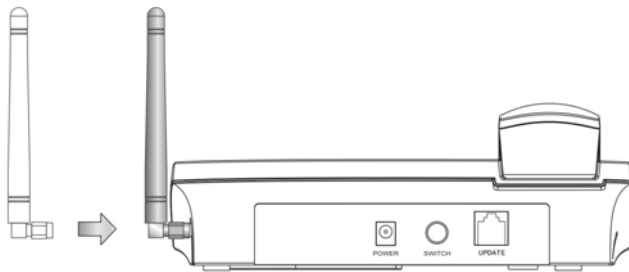
(4)

(5)

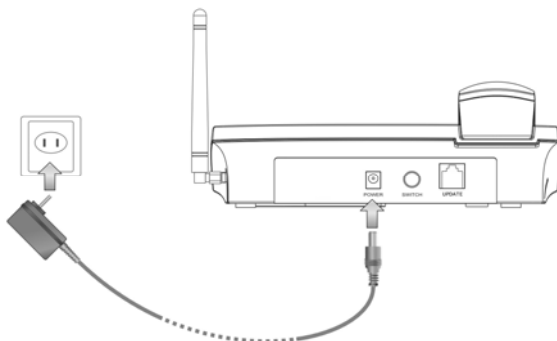
## Assembling the Telephone



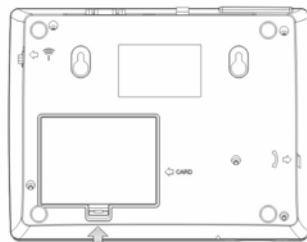
(1) Connect the spiral cord to the handset



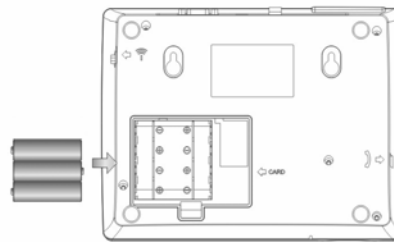
(2) Connect the antenna



(3) Connect the power supply adapter



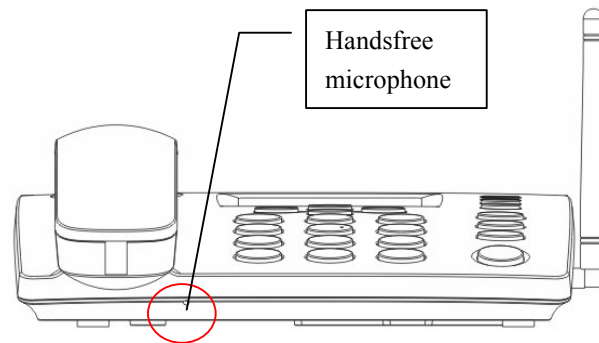
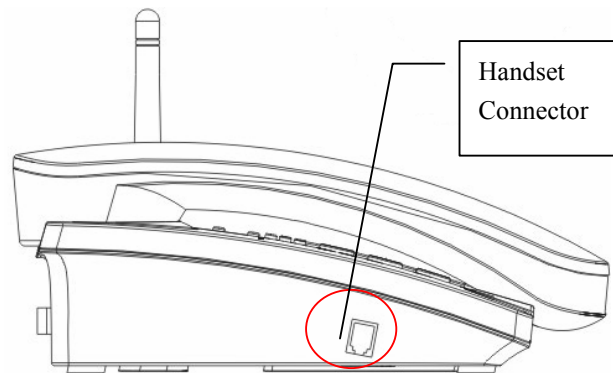
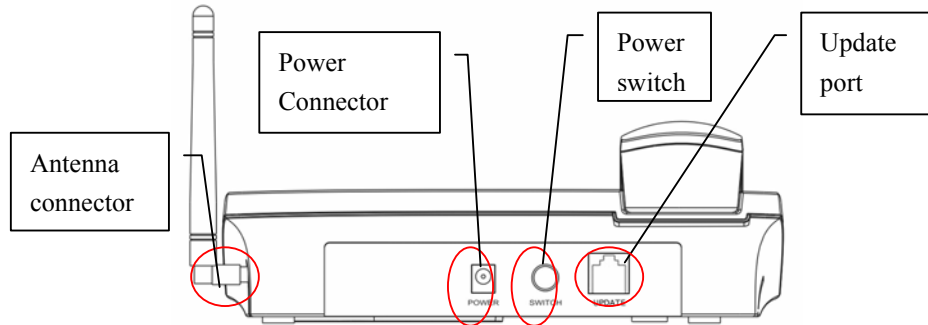
Press the back cover along the direction of the arrowhead.

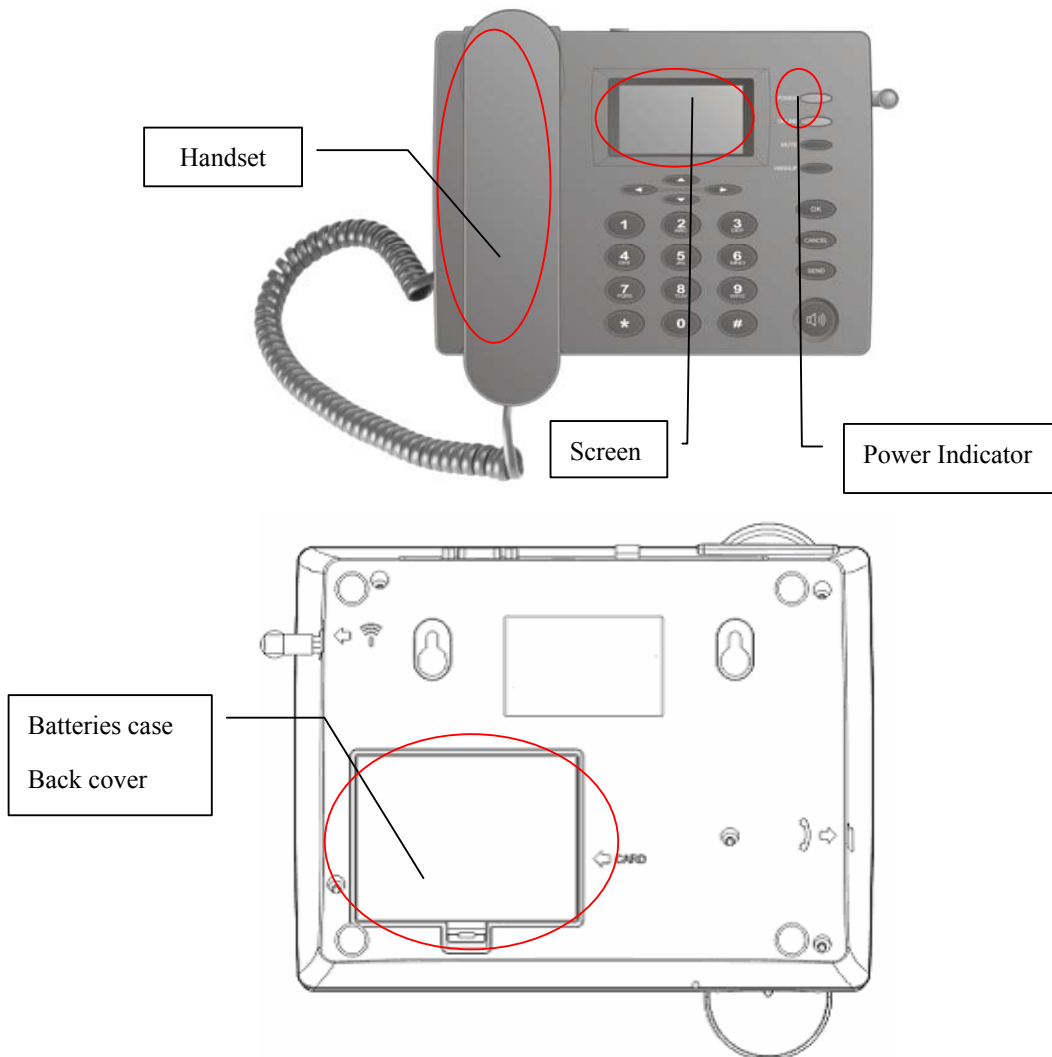


Put batteries into case, and take the back cover on (Pay attention to a node and the cathode of battery)

(4) Attach the batteries

**The name of each parts**





Power Indicator	Describes:
Power lamp	The designation of power supply. When the phone is booted up, the power lamp keeps bright.
On-line lamp	When in handsfree, the lamp stays bright.

## The key description

Keyboard position

<div style="border: 1px solid black; padding: 5px; width: fit-content; margin: 0 auto;">SCREEN</div>			POWER
			ONLINE
			MUTE
			HANGUP
◀	▼	▶	
1	2	3	OK
4	5	6	CANCEL

7	8	9	SEND
*	0	#	HANDSFREE

**Note:** The position of HANDSFREEand SENDis different by different telephone.

**The key definition describes:**

- ◀: Press it to carry out the function of the left soft key on screen.
- ▶: Press it to carry out the function of the right soft key on screen.
  - ▲: When idling, press it to enter call log. In menu, press it to be up in the menu; when talking, press it to increase the voice volume.
  - ▼: When waiting, press it to enter short messages. In menu, press it to go down in the menu tree; while talking, press it to get lower the voice volume.
- MUTE: While talking, press it to activate or de-activate the microphone.
- HANGUP: In menu, press it to return to waiting; While talking, press it to end call; When ringing, press it to refuse the call; When talking, press it to end the call.
- OK: Press it to carry out the function of the right soft key.
- CANCEL: Press it to carry out the function of the left soft key.
  - HANDSFREE: When waiting, press it to dial in handsfree; When waiting, press it to input telephone number and send out in handsfree; When in handsfree mode, press it to end dialing in handsfree.
  - SEND: After inputting telephone number, press it to send out the number. When viewing telephone book, press it to call out the number.
  - 0-9: When waiting or dialing, use the keys to input the numbers he or she wants to dial; In menu, press the keys to the correspond menu. When waiting or talking on handsfree, user press '0' for a few seconds, and could get '+' as the first inputting number;
  - \*: When waiting or taking on or handsfree, press it to input '\*'.
  - #: When waiting or taking on or handsfree, press it to input the '#'.

**Note:** The Function of the keys above in Input method consults explanation of Input method.

## Phone operation

Before using the telephone, user should make sure that the power is on and the correct SIM card is inserted. The phone is activated when you see the name of the network operator appear on the screen.

If the power has been on, but user did not insert SIM card, the phone prompts to insert SIM card and to check whether it could be used or not.

**Warning:** Before taking out SIM card, user must turn off the phone. DO NOT insert or remove SIM card, when the power supply adapter is connected with the telephone, otherwise SIM card may be damaged. For preventing to lose or damage the information in the card, user should not touch the metal surface of SIM card, and keep it far away from electricity and the electromagnetism. If SIM card once get damaged, user could not enter the GSM network.

**a) To Make call**

- 1) Originating call or press HANDSFREE, and then user could hear the dial tone, now user can dial the telephone number.
- 2) When waiting, user also could input the number he or she want. And in this situation, if user picks up the handset or press HANDSFREEor SEND, the number could be

sent out.

- 3) While beginning to dial number, the screen displays the dialed number. If the user inputs the wrong number, user can press  CANCEL  or “Clear” to clean up the last number.
- 4) After inputting the number, user needs to press  Send  to send out the number in a few seconds (user could modify the length of time in auto call).
- 5) After connecting, the length of call time will display on the screen.
- 6) While talking, press  ▲  ▼  to adjust the volume.

**b) Dialing a number in the telephone book**

In the telephone book, press  ▲  or  ▼  to view it and find out the number user want to dial and then press  SEND  to send out the number user wants to dial.

**c) Answering a call**

When ringing, take up the handset or press  HANDFREE  to answer the call.

**d) Ending a call**

Replace the handset on the cradle to end call.

After hand free to have call, press  HANDFREE  to end call

Press  HANGUP  to end call.

**e) To Refuse a call**

When ringing, press  HANGUP  to refuse the call.

**f) Redial**

When waiting, press  SEND  two times to call the last number.

**g) Adjusting handset volume**

When calling, press  ▲  to increase the volume level, and  ▼  to decrease.

**h) Handsfree**

When waiting, press  HANDSFREE  to enter Handsfree mode, and user could hear the dial tone. Now user could dial.

## Introduction of menu function

### Message

User could send out or receive message in English. When idling, press  ▼  or press  Select  at message item, then enter the message submenu.

#### 1.1 “Write message”

The message network service allows user to send out message to other terminal. Make sure that the correct service center number has been installed in the Phone Settings before writing a message.

After entering the “Write” submenu, user could input message (consult the input method) and finish the message. And then, user should choose the operation, “Send”, “Send More”, “Insert Word”, “Save” and “Send & Save” included.

#### 1.2 “Inbox”

In the received messages box, it show whether it has been read or not, the received date, the

received time and sender's number or name (the number existing in the telephone book). While receiving a message, the phone plays and incoming message ring, and screen shows "***I new message***", user could read new message at once or later. The number of messages (included messages in the Inbox, and in the Outbox) the phone could keep depends on the SIM card's and phone capability. Deleting old messages in time is important to keep enough memory for future messages. .

Press the up or down key to select message forward or backward.

At message list, Press "***Read***" to read detailed contents of the message. And then press "***Option***" to continue the next step:

Press "***Answer***" to replay using message format.

Press "***Forward***", user should choose the operation, "***Send***", "***Send More***", "***Insert Word***", "***Save***" and "***Send & Save***" included.

Press "***Use number***" to save the number into the telephone book.

Press "***Call***" to dial the number which sends the message to you.

Press "***Delete***" to delete the message.

Press "***Delete All***" to delete all messages in "***Inbox***".

### 1.3 "***Outbox***"

In the sent message box, it will display the message state and the sender's number or name (the number exists in telephone book).

Press the up or down key to select message forward or backward.

After message list displays, press "***Read***" to read detailed contents of message. And then press  ***Option***  to continue the next step operation:

Press "***Send***" to resend the message.

Press "***Edit***" to edit the message again, then do "***Send***", "***Send More***", "***Insert Word***", "***Save***" and "***Send & Save***".

Press "***Delete***" to delete the message.

Press "***Delete All***" to delete all messages in "***Outbox***".

### 1.4 "***SMS Setting***"

Before using message function, user need do some necessary setting. Entering message "***SMS Setting***" submenu, the following submenu will be displayed:

#### a) "***Valid period***"

In the valid period, the message center will send messages again and again until it is received. Message validity period could be applied to all sent messages. User can set the valid period as : maximum 1 hour; 6 hours; 24 hours; 72hours; 1 week.

Note: The function is dependent on network operator.

#### b) "***Service center***"

Please ask the NETWORK SERVICE PROVIDER for the message service center number. The next step is to choose "***Service center***" submenu, and press  ***OK*** , input the message service center number, and press  ***OK***  to finish the settings.

#### c) "***Insert Word***"

After message list displays, there are ten kinds of message examples. User can choose the different message that user need.

#### d) "***Status report***"

If you enable the Status report function, when you send out a message, the message service center returns a report to tell you whether message is sent out successfully.

### 1.5 “Space”

User could get how much memory is used to store messages and how much is left.

## Call log

Call log can keep the last twenty missed calls, last twenty received calls and last twenty dialed calls.

When waiting, Press  $\square \blacktriangle \square$ , or at “*Call log*” in main menu, press  $\square \text{OK} \square$  to enter the call log submenu, “*Missed calls*”, “*Received calls*”, “*Dialed calls*”, “*Call timers*” submenu and etc. Press  $\square \blacktriangle \square \blacktriangledown \square$  to view it. Press  $\square \text{OK} \square$  to display item. In “*Missed*”, “*Received*”, “*Dialed*” submenu, user could check record detail, save recorded numbers, delete record, call the recorded number, send message to the number, and delete all record.

## PB (Phonebook)

When waiting, Press  $\square \blacktriangleleft \square$  or press  $\square \text{OK} \square$  enter phone book submenu.

### 3.1 “Find”

- a) Input the name you want to find.
- b) Display telephone number list. User could do the following operation.

Press  $\square \blacktriangle \square \blacktriangledown \square$  to view record.

Press  $\square \text{Send} \square$  to make a call.

Press  $\square \text{Detail} \square$  to view the particular content. Then, if press  $\square \text{Operate} \square$  to do “*Send message*”, “*Call*”, “*Modify*” or “*Erase*” operation. “*Modify*” means to edit the number and the name in turn and “*Erase*” means to delete the number,.

### 3.2 “Add”

1. Choose to save number to “*SIM*” or “*Phone*”, press  $\square \text{OK} \square$  to enter it.
2. Input name and number.

### 3.3 “Erase ALL”

User could carry out “*SIM all*” or “*Phone all*” .

### 3.4 “Copy ALL”

User could copy all the number and the names “*From SIM to Phone*” or “*From Phone to SIM*”.

### 3.5 “MSISDN”

Display the telephone’s number. If there is no number in SIM card, user could enter or modify the number.

### 3.5 “Used Space”

Display the usage of the phone space.

## Setting

In the submenu, user could set the telephone as he or she likes.

- 4.1 **“Ring”**: After entering, user could see the following submenu.
- a) **“Select ring”**: Choose from 20 different kinds of ringtones. On the message tone, user could choose 3 kinds of ringtones.
  - b) **“Volume”**: Change the volume of the call ringtone and the message ringtone and the speaker volume and the keypad tone.
- 4.2 **“Alarm”**: There are 2 alarm tones
- 4.3 **“Time and date”**: Set clock and date of the telephone.
- 4.4 **“Select language”**: Choose the language of telephone using in English or in Chinese.
- 4.5 **“Display set”**: After entering, user could see the following submenu.
- a) **“Back light”**: Set brightness of back light and length of back light brightness.
  - b) **“Contrast”**: Press  $\square \blacktriangle \square \blacktriangledown \square$  to modify.
- 4.6 **“Security set”**: Start or close the function of checking PIN. When start the function, user could modify PIN.
- 4.7 **“Reset”**: Resume the factory setting.

## Call service

**This function is about network settings.**

**Note:** The phone needs the support of the network operator.

- 5.1 **“Select network ”**: User could choose **“Auto ”** mode or **“Manual ”** mode.
- 5.2 **“Call diverts”**: open, close and interrogate all kinds of **“Call diverts”** including: **“Divert ALL Call”**, **“When busy”**, **“No answer”**, **“Not reachable”**, **“Cancel all”**.
- 5.3 **“Call waiting”**: open, close and interrogate the **“Call waiting”** function.
- 5.4 **“Call bar”**: open, close and interrogate all kinds of **“Call bar”** function, including: **“Bar All MO Call”**, **“Bar All MT Call”**, **“Bar MT Call ROAM”**, **“Bar MO Call INTL”**, **“Bar MO Call EXHC”**.
- 5.5 **“Outgoing unshown”**: interrogate the **“Outgoing unshown”** additional function
- 5.6 **“Hotline”**: If the Hotline status is open, when the User takes the handset off the hook, user does not need to press any key, and wait 2 - 9 Secs (selectable by user), then the phone could make an automatic call (the number is selectable by user).
- 5.7 **“Speed Dial”**: User could add and delete the **“Speed Dial”** number.
- 5.8 **“Band Select”**: select the service Network band.

## The usage of basic function

### The function of the menu while talking

When talking, press  $\square$  menu  $\square$ , user could do some functions with shuttle, PB, message etc .

Shuttle: Switch lines. (Need the network operators service activated) .

PB: User could do the phone book operation.

Message : User could receive message, also send out or save message. And do message setting and broadcast setting etc.

Mute operation: To open or close mute function in calling.

## Text method

In the input method, user could input capital letter, small letter and special signs.

Press **1** quickly to input punctuations.

Press **2-9** quickly to input letters and numbers.

Press **\*** switch capital letter, small letter.

Press **0** quickly to input the “space”.

Press **#** switch the method.

## Troubleshooting and Possible and Causes

Trouble phenomenon	Possible cause
Phone cannot bootup	<ol style="list-style-type: none"> <li>1. The power switch is not on</li> <li>2. The batteries are not charged enough</li> <li>3. Power supply adapter has connected</li> </ol>
PIN incorrect	<ol style="list-style-type: none"> <li>1. Insert wrong SIM card</li> <li>2. SIM card is locked and has to be enable by the network operator</li> </ol>
Loss of connection while talking	<ol style="list-style-type: none"> <li>1. battery charge is low</li> <li>2. Signal intensity is not enough</li> </ol>
Volume low	Press <b>▲</b> while Talking